



School and District Accountability



COLORADO
Department of Education

The goal of our education system in Colorado is to prepare all students for success in the workforce and college.

Each year, every school and district receives a performance rating to let parents and communities know how well they are doing in meeting this goal.

Part of the reason students take state assessments is to help understand which schools and districts need support and which we may want to learn from. The other reason students take state assessments is to give parents and teachers additional information about how individual students are doing.

Information from state assessments, along with such postsecondary measures as graduation rates, drop-out rates, college entrance exams and college matriculation rates, factor into performance ratings assigned to schools and districts. The ratings also help the Colorado Department of Education, State Board of Education and legislators make decisions about how to help struggling schools.

RATINGS ARE BASED ON THREE CATEGORIES OF PERFORMANCE:

ACADEMIC ACHIEVEMENT

Average scores on state assessments in each grade.

The average is sometimes called the “mean scale score.”

Using the average score ensures that the achievement of all students and disaggregate groups is incorporated into this component of school ratings. (English language arts, math and science)

How Scores are Weighted for Elementary and Middle Schools

40% Academic Achievement

60% Academic Growth

ACADEMIC GROWTH

Progress students make in their achievement on assessments from one year to the next. Growth is calculated on the following assessments:

- CMAS assessments in English language arts and math
- PSAT and SAT assessments given to high school students
- ACCESS assessment for all students and disaggregate groups who are still learning the English language

How Scores are Weighted for High School and Districts

30% Academic Achievement

40% Academic Growth

30% Postsecondary Readiness

POSTSECONDARY READINESS

High school and district ratings depend on the following factors, which indicate how well schools are preparing students for college and the workforce.

- Graduation rates
- Dropout rates
- Matriculation into a college or career certificate program
- Average scores on the SAT college entrance exam

School and District Accountability

Ratings are Assigned to Schools and Districts

Every year districts receive a District Performance Framework (DPF) report, which determines their accreditation rating. Schools receive School Performance Frameworks (SPF), which determine their school plan types. Districts may submit additional performance data to CDE through the Request to Reconsider process to best describe the performance of the school or district.

SCHOOL RATINGS

- Turnaround
- Priority Improvement
- Improvement
- Performance Distinction
- Insufficient State Data: Small Tested Population
- Insufficient State Data: Low Participation

DISTRICT ACCREDITATION RATINGS

- Turnaround
- Priority Improvement
- Improvement
- Accredited
- Accredited With Distinction
- Insufficient State Data: Small Tested Population
- Insufficient State Data: Low Participation

STATE ASSESSMENTS

State assessments determine how well students are mastering our Colorado Academic Standards – a rigorous grade-by-grade road map to help ensure students are successful in college, careers and life. Assessments used to calculate school and district performance ratings are:

- Colorado Measures of Academic Success in math and English language arts – third through eighth grade
- CMSA science – grades five, eight and 11
- PSAT – ninth and 10th grade
- SAT – 11th grade

LEARN MORE

<https://www.cde.state.co.us/communications/resourcesforparents>

<http://www.cde.state.co.us/accountability/performanceframeworks>

View all CDE fact sheets: <http://www.cde.state.co.us/communications/factsheetsandfaq>



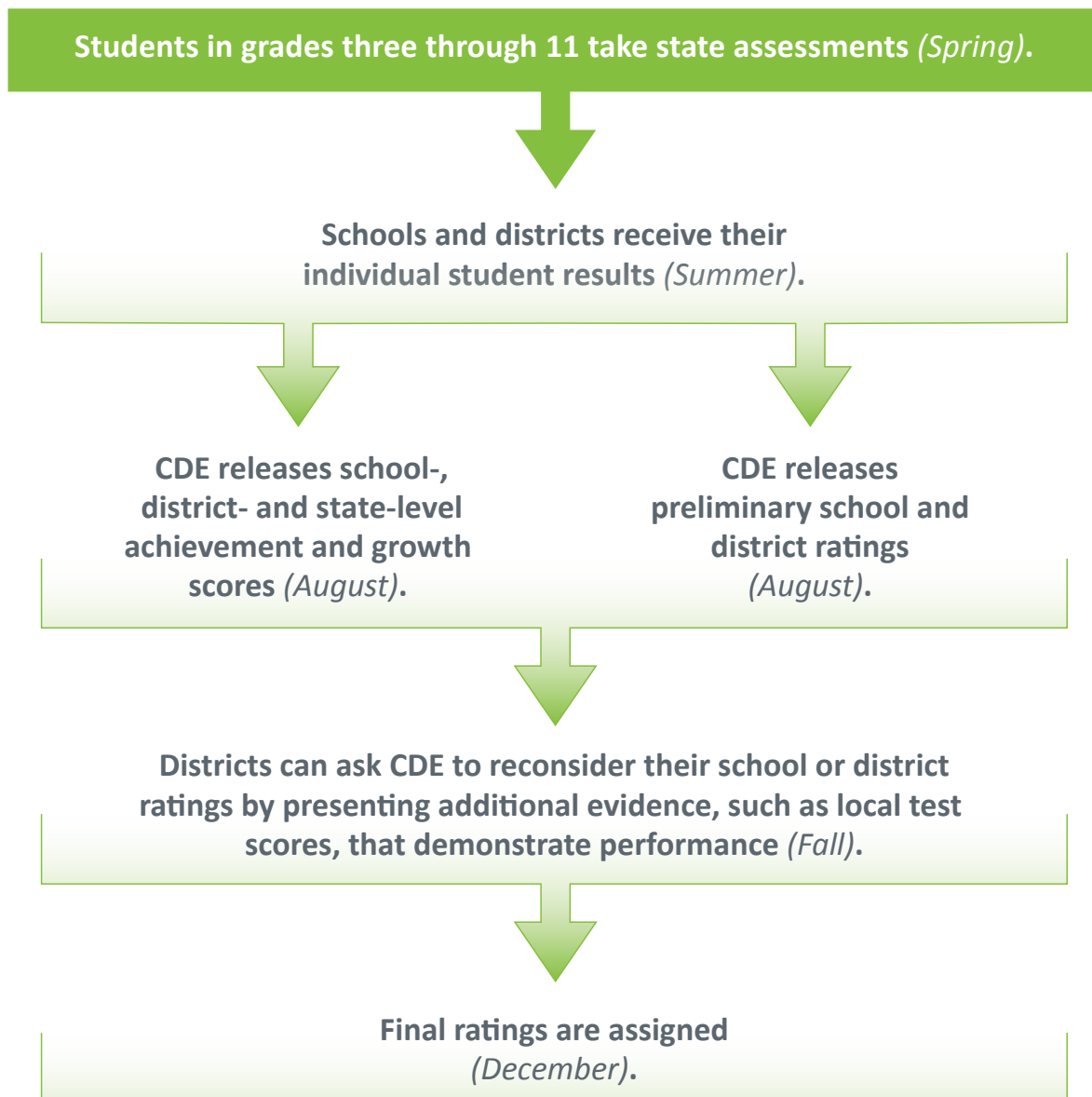
COLORADO
Department of Education



School and District Accountability



Process for Assigning School and District Ratings



LEARN MORE

<https://www.cde.state.co.us/communications/resourcesforparents>

<http://www.cde.state.co.us/accountability/performanceframeworks>

View all CDE fact sheets: <http://www.cde.state.co.us/communications/factsheetsandfaq>

